

Stolen images of Nepal

Brigadier General (Retd) Prem Singh Basnyat, PhD

Guest Professor: Leshan Normal University, China

British Chevening Scholar

www.premsinghbasnyat.com.np

Basbari, Kathmandu, Nepal

STOLEN IMAGES OF NEPAL

LAIN S. BANGDEL





Standing Buddha, Chabahil, Deopatan, 5th Century A.D., stolen in July, 1985



Standing Buddha, Chabahil, Deopatan, 5th Century A.D., stolen in July, 1985



Another view of Standing Buddha



Seated Buddha, Kunti-bahi Chaitya, Kumbhesvara, Patan. 6th Century A.D., stolen in April, 1985



Seated Buddha, Kunti-bahi Chaitya, Kumbhesvara, Patan. 6th Century A.D., stolen in April, 1985



Another view of Seated Buddha, Kunti-bahi Chaitya, Kumbhesvara,
Patan. 6th Century A.D., stolen in April, 1985



**Torso of a Female Divinity, Vatsalesvari, Pashupati, 2nd-3rd century A.D.,
stolen in the late 1960**



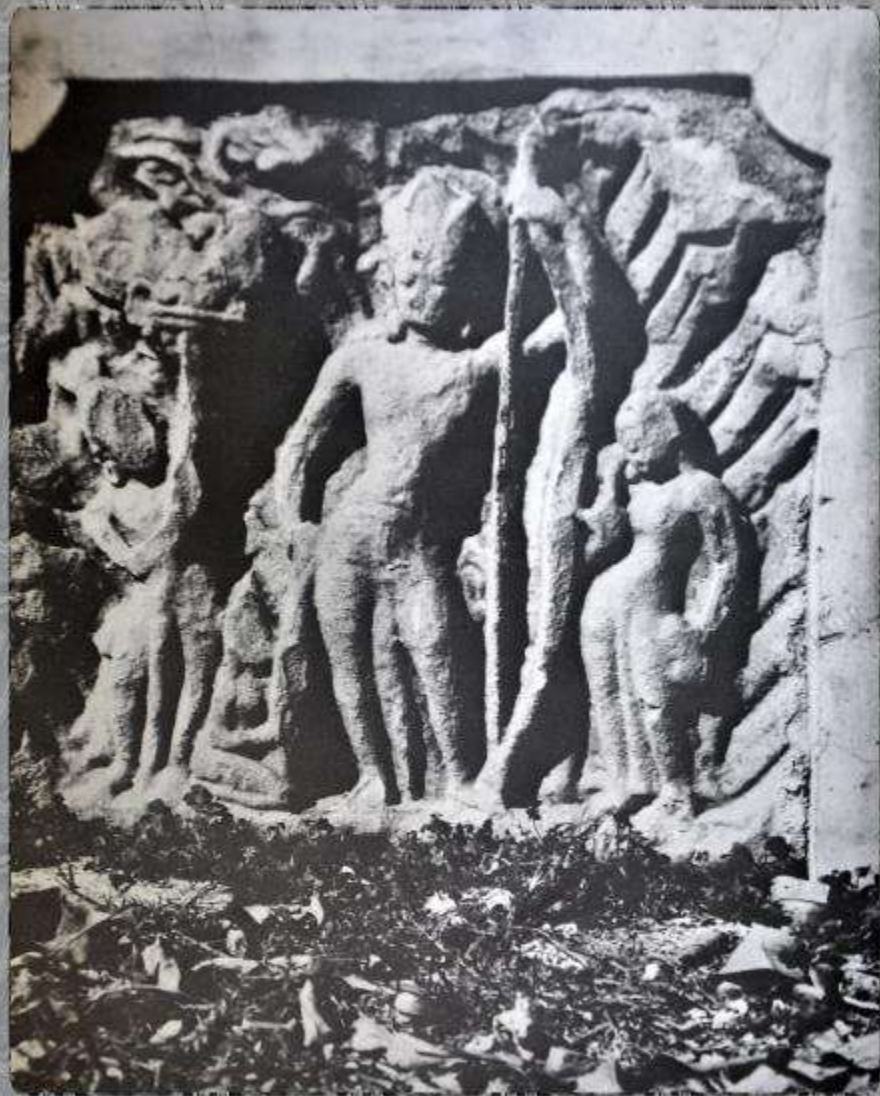
Surya, Saugal, Patan, A.D. 1083 on the night of May 16, 1985



Surya image protected with grill



Brahma, Mrigasthali, 12th century A.D., stolen in the early 1980's



Rama, Rudragadesvara, Pashupati, 10th-11th century A.D., stolen on the night of July 27, 1985



Rama, Rudragadesvara, Pashupati, 10th-11th century A.D., stolen on the night of July 27, 1985



Two Uma-Mahesvara panels from Nayapachatol, Kathmandu



Nagaraja, Pashupati, 12th century A.D., stolen in June, 1985



Standing Buddha, Bungmati, 10th century A.D., stolen in the mid 1970's



Uma-Mahesvara, Gahiti, Patan, 10th century A.D., stolen in the mid 1960's



Headless Vishnu, Bhuvanesvari Temple, Pashupati, 14th century A.D.,
stolen in July, 1986



**Ekamukha Shiva-linga, Rajrajesvari-ghat, Pashupati, 12th century A.D.,
stolen in January, 1985**



Uma-Mahesvara, Kumbhesvara, Patan, 14th century A.D., stolen in October, 1985



Garudasana Vishnu, Hyumat-tol, Kathmandu, 10th century A.D., stolen in the late 1970's



Standing Buddha, Vinchey-bahal, Patan, 9th century A.D., stolen in 1982



Standing Vishnu, Panchadevala, Pashupati, 17th century A.D., stolen in June, 1985



Standing Buddha, Nakabahi Chaitya, Patan, 10th century A.D., stolen in the mid 1970's



Surya, Surya-kunda, Shikhara Narayana, Pharping, 14th century A.D.,
stolen in March, 1985



**Nagaraja, Kunti-bahi Chaitya, Kumbhesvara, Patan, 14th century A.D.,
stolen on the night of July 20, 1985**



**Standing Vishnu, Bhuvanesvari Temple, Pashupati, 5th century A.D.,
stolen in February, 1986**



The half buried of Vishnu (before renovation)



Side view of Bishnu



Devi, Banepa, 14th century A.D., stolen in the late 1970's



Devi, Banepa, 14th century A.D., stolen in the late 1970's



Standing Buddha, Yampibahal, Patan, 9th century A.D., stolen in 1982



Standing Vishnu, Jyathatol, Kathmandu, 10th century A.D., stolen in the late 1970's



Chaturmukha Shiva-linga, outside Panchadevala, Pashupati, 8th century
A.D., stolen in July, 1984



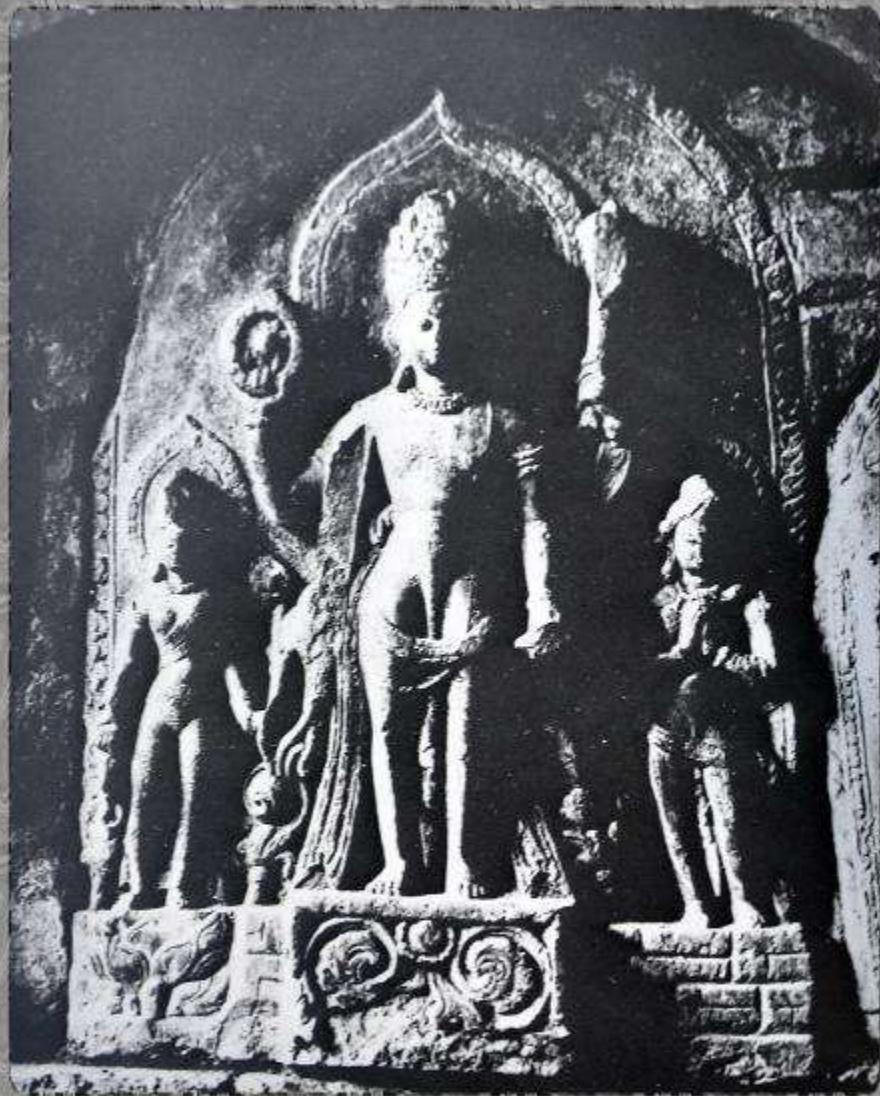
Standing Surya, Pharping, 14th century A.D., stolen in late 1982 or early 1983



**Three Female Devotees, Chabahil Stupa, Deopatan, 7th century A.D.,
stolen in the early 1980's**



Uma-Mahesvara, Jaibagesvari, Deopatan, 14th century A.D., stolen in the early 1970's



Vishnu with Lakshmi and Garuda, Timladhava Temple, Bhaktapur, 12th century A.D., stolen in the late 1970's



Parasurama, Rudragadesvara, Pashupati, 11th century A.D., stolen in July, 1983



Standing Buddha, Nakabahi, Patan, 10th century A.D., stolen in the late 1970's



Two Female Devotees, Chabahil Stupa, Deopatan, 7th century A.D.,
stolen in early 1985



Sleeping Vishnu, Changu Narayan, 17th century A.D., stolen on the night of 28 December, 1986



Vajrapurusha, Tah-bahal, Patan, 10th century A.D., stolen in 1983



Chaturmukha Shiva-linga, Pashupati, Dakshinamurti, 15th century
A.D., stolen in February, 1985



Surya, Changu Narayan, 15th century A.D., stolen in 1982



Surya seen on the left of Visvarupa Vishnu, Changu Narayana



Another view of Surya



Standing Buddha, Vajrayogini Temple, Sankhu, 13th century A.D., stolen in the mid 1980's



Sarasvati kunda Lele, 15th century A.D., stolen in October, 1984



Mahagauri, Deopatan, A.D. 1238, stolen in the mid 1970's



Seated Devi, Satya Narayana Temple, Hadigaon, 13th century A.D.,
stolen in the early 1984



Chaturmurti, Epatol, Sankhu, 8th-9th century A.D.



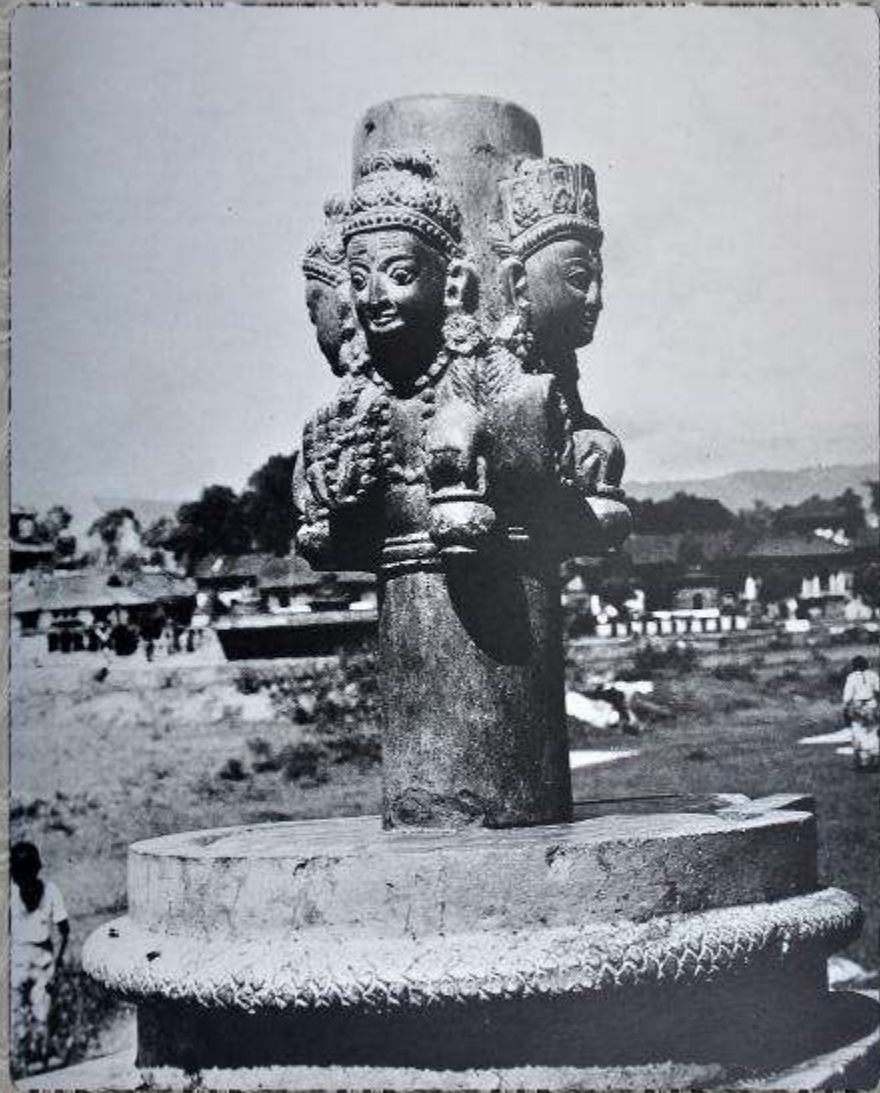
Shiva and Vishnu



Brahma, Ardhanarisvara



Bodhisattva Padmapani, Jaibagesvari, Deopatan, 15th century A.D.,
stolen in the mid 1970's



Chaturmukha Shiva-linga, Rajghat, Pashupati, 18th century A.D., stolen in January, 1985



Vishnu with Lakshmi and Garuda, Bhimdhara, Bhaktapur, 10th century A.D., stolen in the February, 1983



Bodhisattva Padmapani, Guitol, Patan, 9th century A.D., stolen in late 1981



Nagaraja, Chabahil Stupa, Deopatan, 7th century A.D., stolen in the late 1970's



Lakshmi, Shankhamul, Patan, 10th century A.D., stolen in the late 1970's



Uma-Mahesvara, Wotol, Dhulikhel, 12th century A.D., stolen in 1982





Dancing Ganesha, Sanga village, 15th century A.D., stolen in the mid 1985



Garudasana Vishnu, Jaibagesari, Deopatan, 12th century A.D., stolen in the late 1970's



Garuda, Satya Narayan Temple, Hadigaon, 10th century A.D., stolen in the early 1970's



Surya, Tribenighat, Panauti, 14th century A.D., stolen in the early 1980's



Uma-Mahesvara, Shakhona, 7th century A.D., stolen in the late 1960's or early 1970's



Nagaraja, Bhagavan Bahal, Naksal, Kathmandu, 12th-13th century A.D.,
stolen in 1982



Aghori Baba, Bankali, Pashupati, 20th century A.D., stolen in November, 1984



Shiva, Tribenighat, Panauti, 13th century A.D., stolen in late 1986



Uma-Mahesvara, Satya Narayan Temple, Hadigaon, A.D. 1414, stole in July, 1985



Surya Flanked by Shiva and Vishnu, Tribenighat, Panauti, 14th century
A.D., stolen in 1981



Uma-Mahesvara, Nasamanatol, Bhaktapur, 12th century A.D., stole on the night of May 23, 1984





Shiva-Kamadeva, Mrigasthali, 19th century A.D., stolen in the early 1980's



Lakshmi-Narayan, Nasamanatol, Bhaktapur, 15th century A.D., stolen in the early 1980's



**Chaturmukha Shiva-linga, Mrigasthali, Pashupati, 5th century A.D., stolen
in June, 1987**



Surya with Navagrahas, Tribenighat, Panauti, 14th century A.D., stolen in the early 1980's



Uma-Mahesvara, Kamal-pokhari, Pharping, 17th century A.D., stolen in early 1984



**Bust of Vishnu, Satya Narayana Temple, Hadigaon, 6th century A.D.,
stolen in the early 1980's**



Surya, Guitol, Patan, 15th century A.D., stolen in the early 1980's



Uma-Mahesvara, Ganesha Temple, Pulchowk, 12th century A.D., stolen
in 1985



Shiva-Kamadeva, Tejesvari Temple, Pashupati, 19th century A.D., stolen in the early 1980's



**Buddha's Descent from Tushita Heaven, Yampibahal, Patan, 8th century
A.D., stolen in mid 1985**



Uma_mahesvara, Ekalkhu, Patan, 16th century A.D., stolen in 1983



Vishnu with Lakshmi and Garuda, Kotsutol, Bhaktapur, 17th century A.D.,
stolen in January, 1985



Vishnu with Lakshmi and Garuda, Tribenighat, Panauti, 14th century
A.D., stolen



Uma-Mahesvara, Jaibagesvari, Deopatan, 19th century A.D., stolen in the late 1970's



**Buddha Flanked by Bodhisattvas, Alkohiti, Patan, 14th century A.D.,
stolen in the late 1970's**



Chaturmukha Shiva-linga, Sesa Narayana, Pharping, 19th century A.D.,
stolen in 1981



Sarasvati, Vajravarahi, 14th-15th century A.D., stolen in the late 1970



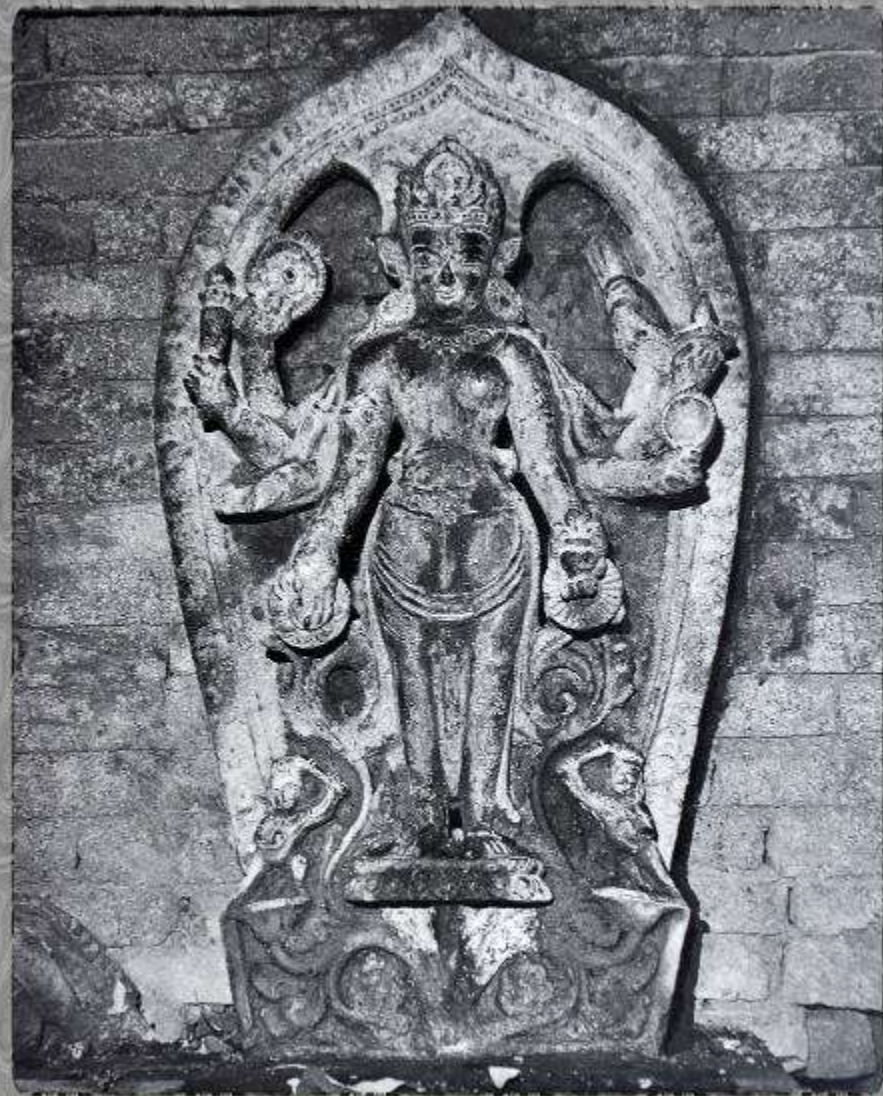
Standing Vishnu, Tribenighat, Panauti, 18th century A.D., stolen in the early 1980's



Garudasana Vishnu, Kumbhesvara, Patan, 13th century A.D., stolen in the late 1970's



Uma-Mahesvara, Bhagavati Temple, Bhaktapur, 14th century A.D., stolen in the late 1985



Vasudeva-Kamlaja, Narayana Temple, Patan, 15th century A.D., stolen in 1984



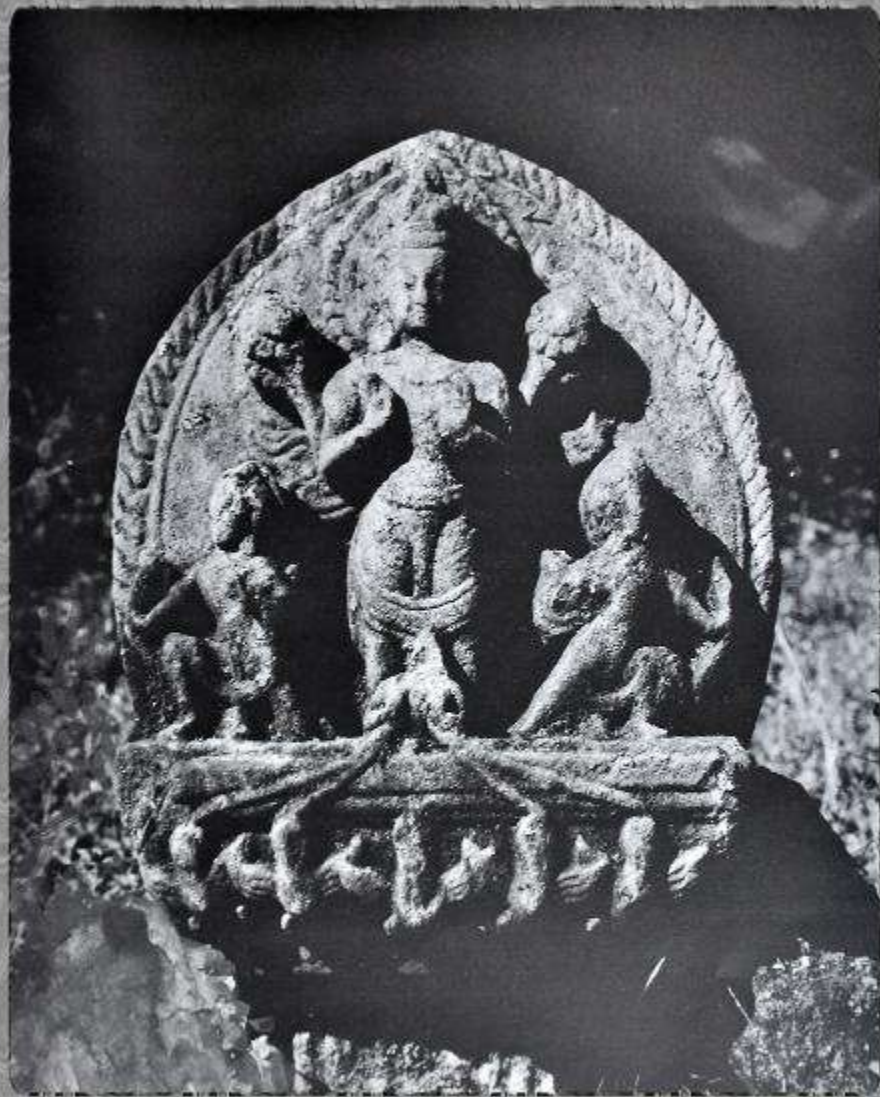
Surya, Satya Narayana Temple , Hadigaon, 18th century A.D., stolen in the late 1970's



Vishnu with Lakshmi and Garuda, Kumbhesvara-dhara, Patan, 17th century A.D., stolen in January, 1985



Vishnu with Lakshmi and Garuda, Jaibagesvari, Deopatan, 12th century
A.D., stolen in the early 1970's



Surya, Satya Narayana Temple , Hadigaon, ca, 18th century A.D., stolen
in the early 1970's



Shiva-Kamadeva, Aryaghat, Pashupati, 19th century A.D., stolen in early 1982



Chaturmukha Shiva-linga, Rajghat, 19th century A.D., stolen in November, 1984



Vaishnavi, Bungmati, 8th-9th century A.D., stolen in the late 1970's



Female Divinity, Sundhara, Patan, 18th century A.D., stolen in the early 1980's



Surya, Sundhara, Patan, 18th century A.D., stolen in the early 1980's



**Female Divinity and Surya seen with Uma mahesvara panel, Sundhara,
18th century A.D.,**



After the Female Divinity and Surya were stolen





Garuda, Naksal Bhagavati, Kathmandu, 13th century A.D., stolen in the mid 1970's



Seated Buddha, Guitol, Patan, 19th century A.D., stolen in September, 1985



Tara, Alkohiti, Patan, 12th century A.D., stolen in the early 1980's



Vishnu with Lakshmi and Garuda, Chyasalhiti, Patan, 12th century A.D.,
stolen in the late 1970's



Uma-Mahesvara, Tangalhiti, Patan, 12th-13th century A.D., stolen in the early 1980's



Vishnu with Lakshmi and Garuda, Chyasalhiti, Patan, 9th century A.D.,
stolen in the early 1980's



Padmapani Avalokitesvara, Tunani, Patan, 9th century A.D., stolen in the early 1970



Two Female Deities with Vishnu standing in the middle, Tunlatol, Sankhu, 17th century A.D., stolen in th early 1980's



Sarasvati, Kamalpokhari, Pharping, 17th century A.D.



Another view of sculpture after the head of the goddess was stolen





The head of the Standing Devi was stolen in the early 1980's



Hari-Hara, Balaju, 9th century A.D.



Kumara, Jhankesvari Temple, Pharping, A.D. 1376. The image was stolen in the early 1980's and later found buried in the bank of Bagmati River

The Metropolitan Museum of Art, New York USA has decided to repatriate 11th and 12th century images of Lord Budhha and Uma Maheshwor, which were stolen from Nepal during the 1980s.







Queries

Thank You